



nonmem2rx / babelmixr2 automatically translates NONMEM to a qualified rxode2/nlmixr2 model/fit

A nlmixr2 model can generate docx/pptx, VPCs or even debug NONMEM models

nlmixr2, rxode2 and NONMEM: interchangeable models using babelmixr2 and nonmem2rx

Introduction: *nlmixr2* (www.nlmixr2.org) is an open-source R package, freely available on CRAN¹ and GitHub². NONMEM³ is a commercial tool for non-linear mixed effects modeling and has been used since 1989.

Objective:

Allow bidirectional translation with nlmixr2/rxode2 and NONMEM.

Methods:

babelmixr2⁴:

- Translate nlmixr2 to mu-referenced NONMEM models
- After NONMEM has run, read in parameters and create a nlmixr2 fit
- Compare the IPRED/PRED values between nlmixr2 and NONMEM

nonmem2rx⁵:

- Parse NONMEM & create rxode2 model
- Compare IPRED/PRED/IWRES between rxode2 and NONMEM
- If nlmixr2 compatible residual specification is not captured, allow manual edits that can be Qualified as well

babelmixr2 and nonmem2rx

- Use babelmixr2 to create nlmixr2 fit from the nonmem2rx output

Validation Models of translation:

- We tested against the models in Perl Speaks NONMEM, DDMoRe, and 3 NONMEM tutorials (~400 models)

Results:

- babelmixr2 models and imported nonmem2rx mdels helped diagnose NONMEM rounding errors and could add covariances
- All but the expected (unsupported) model types were imported to rxode2:
 - Perl Speaks NONMEM validation suite⁶: 203 models (193 translated, 10 with expected errors)
 - DDMoRe model scrapings⁷: 131 models(104 translated, 27 with expected errors)
 - NONMEM tutorials^{8, 9, 10}: 44 models (41 translated models, 3 with expected errors)

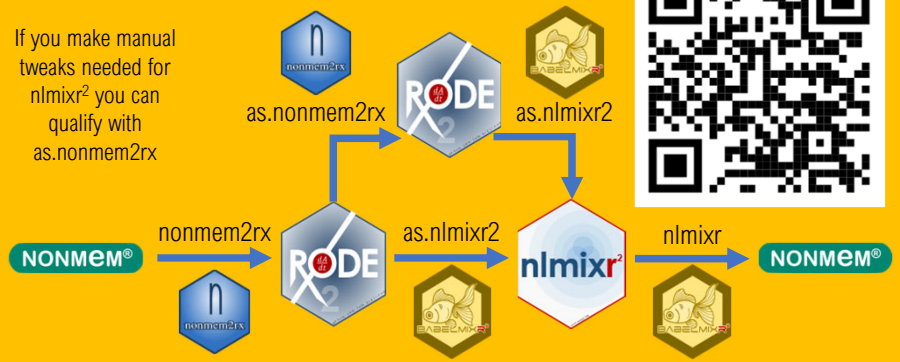
Conclusions:

These results show that these tools can be used to speed up model development time while instantaneously knowing how well the translation tools are performing relative to one another.

References:

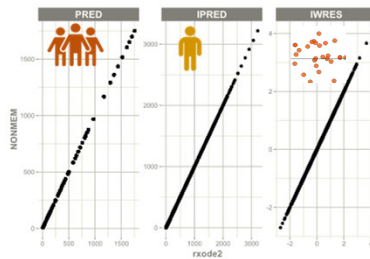
- [1] <https://cran.r-project.org/package=nlmixr2>
- [2] <https://github.com/nlmixr2/nlmixr2>
- [3] Beal SL et al. 1989-2011. NONMEM Users Guides. Icon Development Solutions, Ellicott City, Maryland, USA.
- [4] <https://github.com/nlmixr2/babelmixr2>
- [5] <https://github.com/nlmixr2/nonmem2rx>
- [6] <https://uupharmacometrics.github.io/PSN/>
- [7] https://github.com/dpastoor/ddmore_scraping
- [8] <https://doi.org/10.1002/psp4.12713>
- [9] <https://doi.org/10.1002/psp4.12404>
- [10] <https://doi.org/10.1002/psp4.12422>

If you make manual tweaks needed for nlmixr2 you can qualify with as.nonmem2rx

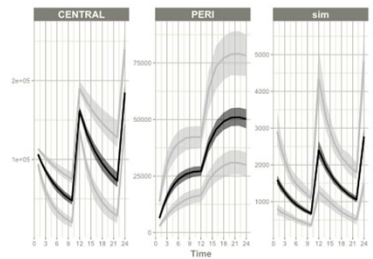


NONMEM to rxode2/ nlmixr2 conversion takes four functions

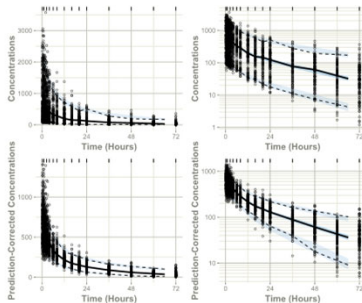
Qualified: population, individual and residual differences are small



Simulate Trials with Uncertainty & Derived Parameters



Create VPC with nlmixr2::vpcPlot() and doc/ppt with nlmixr2report::report_fit()



Read/Debug NONMEM with rounding errors & add covariance nlme::getVarCov()

I don't know if I will ever get a model without rounding errors or a covariance step



Try nonmem2rx / babelmixr2



Authors

Matthew Fidler^{1,8}, William S. Denney^{2,8}, John Harrold^{7,8}, Richard Hooijmakers^{4,8}, Rik Schoemaker^{3,8}, Max Taubert^{1,8}, Mirjam Trame^{5,8}, Theodoros Papathanasiou^{6,8}, Justin Wilkins^{3,8}

¹Novartis Pharmaceuticals, USA, ²Human Predictions, USA, ³Occams, The Netherlands, ⁴LAP&P Consultants, The Netherlands, ⁵Certara Strategic Consulting, USA, ⁶GSK, Switzerland, ⁷Seagen, ⁸The nlmixr2 team

Sock Puppet from Myles McCoy from the Noun Project